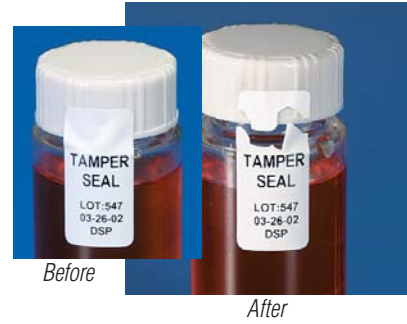
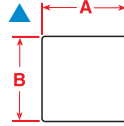


Laboratory Identification Labels

CONTINUED

- F** Freezer environment
- N** Liquid nitrogen environment
- A** Autoclave environment
- H** Hot water (100°C) baths
- S** Self-laminating label
- L** Low-profile (extremely thin) label
- R** Removable



▶ BOTTLE TAMPER SEAL LABELS

Diagram	Part Number	Label Width A Inch (mm)	Label Height B Inch (mm)	Pieces/ Package	Printer Ribbon	Special Properties
▲	PTL-17-351	1.000 (25.40)	0.500 (12.70)	500	R6210	F
▲	PTL-31-351	1.500 (38.10)	1.000 (25.40)	250	R6210	F
▲	PTL-20-351	2.000 (50.80)	1.000 (25.40)	100	R6210	F
▲	PTL-37-351	3.000 (76.20)	1.900 (48.26)	100	R6210	F

PORTABLE PRINTERS AND LABELS

TLS2200 / TLS PC LINK LABELS LABORATORY ID