

LabelMark™ Labeling Software



LabelMark Software

Part Number	Version
LM	CD-ROM

3.5" disk version may be ordered for free after purchase.

Requirements

- ▶ 100% IBM-compatible PC with at least a 486 or compatible microprocessor
- ▶ Microsoft Windows™ 95 or later
- ▶ CD Drive
- ▶ Hard disk with 20 MB of free space
- ▶ 16MB of RAM
- ▶ Printer with a Windows compatible device driver
- ▶ Mouse or compatible pointing device supported by Windows (strongly recommended, but not required)

Labelmark labeling software offers features that make creating labels efficient and accurate. This program is written specifically for identification applications in the telecommunication and electrical markets. Designed with the user in mind, Labelmark labeling software is the logical solution for label design, editing and printing.

Label Design

Labelmark labeling software, with its easy to use graphical interface, offers the user the ability to design labels in line-edit or free-form modes.

Enhanced serializing, barcoding, graphics and data importing capabilities makes label design quick and easy.

- ▶ Option for line-edit or free-form mode for label design
- ▶ Several common barcode symbologies available
- ▶ Ability to import graphical images
- ▶ Data import capabilities including ASCII and ODBC

Label Editing

Labelmark labeling software is a Windows based software that takes full advantage of edit capabilities. The user can easily change fonts, font size, rotate text and objects, and vary line spacing.

- ▶ Easy to use single screen editing
- ▶ Active label highlighted during design and editing
- ▶ Multiple document interface allowing user to work with different labels at the same time
- ▶ Password protection of labels to prevent unauthorized changes
- ▶ Ability to flip/flop data on label

Label Printing

Labelmark labeling software can accommodate variable label sizes, making it ideal for a variety of labeling applications. The software works with virtually all Brady media and includes stock or custom formats for special labeling needs. It can print to a variety of printer devices including Brady's TLS2200® and TLS PC Link™ printers.

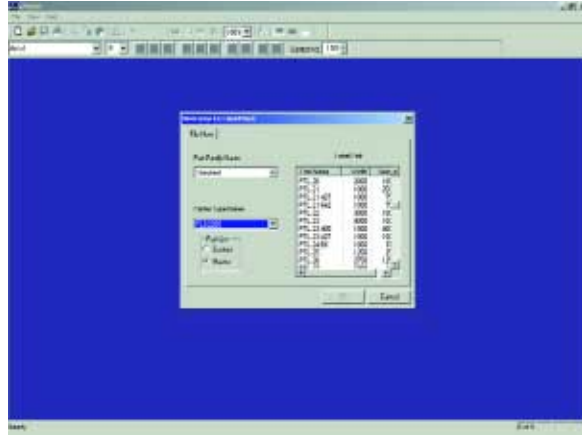
- ▶ Accommodates stock and custom formats
- ▶ Works with a variety of different printers to suit various applications
- ▶ Direct printing to Brady's TLS2200® and TLS PC Link™ printers

LabelMark™ Labeling Software

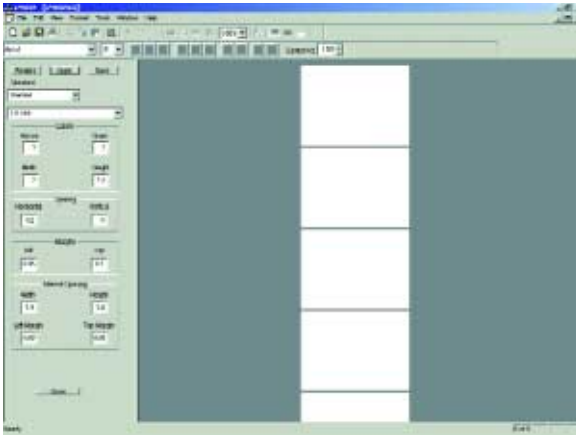
CONTINUED

Applications Include

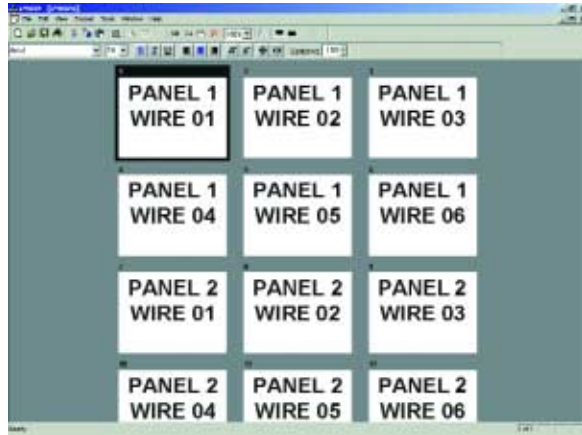
- ▶ Wire and Cable Marking
- ▶ Terminal Block Identification
- ▶ Control Panel and Component Marking
- ▶ Voice and Data Equipment Labeling
- ▶ Circuit Board and Component Tracking
- ▶ Rating Plate Identification
- ▶ Quality Assurance Labeling
- ▶ Asset Identification



LabelMark will print to all stock and custom Brady labels. Getting started is easily done by selecting the right label size.



Creating and editing labels is easy with LabelMark because of the ability to see multiple views simultaneously.



LabelMark is true WYSIWYG since it displays all the labels as they appear.

CODESOFT™ 6 Label Design Software



Systems Requirements

- ▶ Windows 95/98/ME/2000 or NT
- ▶ Windows 95 with 16 Mb of RAM (32 recommended)
- ▶ Windows 98 or ME with 32 Mb of RAM (64 recommended)
- ▶ Windows 2000 or NT with 64 Mb of RAM (128 recommended)
- ▶ Hard Drive with at least 130 Mb of free disk space
- ▶ VGA graphical screen or better
- ▶ CD-ROM drive

CODESOFT™ 6 is a 32-bit, Windows™ based software solution, designed to meet all of your identification and label design needs. This new software is powerful, programmable, easy to use, and open to data and functions from other frequently used software packages. Use the wide range of Codesoft 6 tools to create and print your labels within minutes.

NEW Features

- ▶ ActiveX Automation version 2 (Microsoft COM compliant) allows CODESOFT 6 Enterprise to be controlled by third party applications for automated labeling; such as Visual Basic, Visual C, Delphi, etc.
- ▶ Multi-Document Interface (MDI) allows user to display several labels at the same time, giving users the ability to work on several files simultaneously and easily copy and paste objects between labels
- ▶ Document Browser permits one tab to list and access the different objects incorporated into the labels. On an alternate tab, the data sources allow users to control the link between the objects and the sources
- ▶ Design functionality allows users to create and color circles, rounded rectangles, polygons and oblique lines; and easily fit text into required box dimensions
- ▶ Preview feature allows user to view graphics and labels prior to opening file

Additional Features

- ▶ Works with over 650 Thermal Transfer and all Windows compatible printers
- ▶ Microsoft® Windows compliant user interface
- ▶ Supports 37 standard bar code formats, and multi-dimensional codes from 8 of the most popular standards.
- ▶ Available in 21 languages
- ▶ Built-in Database Manager and 32-bit ODBC compatibility makes it easy to design and utilize database information.
- ▶ OLE Automation supports object integration from any third party Windows application
- ▶ Convert option makes it easy to open, print and save non-Codesoft label files

Brady offers a variety of different CODESOFT 6 packages to meet your application needs. See the following page for a description of the different packages available.

CODESOFT™ 6 Label Design Software

CONTINUED

CODESOFT 6 ENTERPRISE

Part Number	Version
CS6ENTER	CD-ROM

CODESOFT 6 Enterprise incorporates Windows functionality and ease-of-use for designing and printing labels on over 650 Thermal Transfer and all Windows compatible printers. ODBC compatibility allows for easy importing from other databases and spreadsheets. Batch Print Manager allows for the creation of custom batches for multi-document print jobs, using the label file name and label quantity as variable data. User Manager gives the administrator enhanced security capabilities and the ability to define access rights to label modification, printing capabilities, database access, interface customization and general use. HTML Forms Generator walks the user through an assistant to create a customized user interface for label printing. COMet captures data from serial communication devices (bar code readers, scales, thermometers) and links it to the labels.

CODESOFT 6 WIN

Part Number	Version
CS6WIN	CD-ROM

Practical solution for labels printed on laser or inkjet printers. CODESOFT 6 Win includes many of the same features as CODESOFT 6 Enterprise, but can only print labels on printers supported by Windows. Provides access to TrueType, PostScript, and ATM fonts and can be used with standard database, spreadsheet and programming applications.

CODESOFT 6 NETWORK

Part Number	Version
CS6NET5	CD-ROM
CS6NET10	CD-ROM
CS6NET25	CD-ROM
CS6NET50	CD-ROM

Client-server based version of CODESOFT 6 Enterprise for access by multiple networked users. Compatible with Windows NT and Novell servers. Licensing available in 5, 10, 25 and 50 user packages.

UPGRADES

Brady offers upgrades from prior versions of Codesoft to Codesoft 6. Please consult with your local Brady Representative, Distributor or Brady Customer Service for more information, or to help identify the correct upgrade package.

For help identifying the correct version of Codesoft 6 for your needs, call Brady Customer Service at (800) 537-8791. For training on these and other Brady products call Brady Technical Support at (800) 643-8766

CODESOFT 6 PREMIER

Part Number	Version
CS6PREM	CD-ROM

CODESOFT 6 Premier is a lower cost alternative to CODESOFT 6 Enterprise. Offers same Built-in Database Manager and ODBC compatibility as Codesoft 6 Enterprise. Fully functional solution with all bar code, graphic, text and most variable capabilities. Other features include Fonts Downloader and File Converter.

The main features which are included in Codesoft 6 Enterprise, but not in Codesoft 6 Premier; are HTML Generator, Active X version 2 interface, User Manager with advanced security options, Batch Print Manager, POF configuration tool, RFID programming, COMet data capture and customizable toolbar.

CODESOFT 6 RUNTIME

Part Number	Version
CS6RUN	CD-ROM

Economical solution for facilities with multiple production lines. CODESOFT 6 Runtime offers all CODESOFT 6 printing capabilities, but restricts the user from creating labels and altering label designs. Shortcut keyboard commands utilize function keys to simplify printing and eliminate the need for a mouse. Imports data from ASCII files and prints tracking reports detailing all data and information sent to the printer.

SENTINEL™ PRINT PACK S/2

Part Number	Version
CS SENTINEL 3PTR	CD-ROM
CS SENTINEL 10PTR	CD-ROM

Sentinel Print Pack S/2 allows you to include data from your host application into CODESOFT 6 designed labels, without leaving the host application. Sentinel Print Pack S/2 connects the data from the host to the CODESOFT 6 printing functions, which provides an enterprise-wide printing system. Host applications can run on any platform: PC, Mini or Mainframe. Sentinel Print Pack S/2 captures the print files generated by the host application and sends them to CODESOFT 6 for printing.

CODESOFT™ 6 Label Design Software

CONTINUED

CODESOFT 6 SOFTWARE FEATURES MATRIX

	CODESOFT 6 ENTERPRISE	CODESOFT 6 NETWORK	CODESOFT 6 PREMIER	CODESOFT 6 WIN	CODESOFT 6 RUNTIME
GENERAL					
Platform	32 bit	32 bit	32 bit	32 bit	32 bit
Pre-Programmed Label Formats	●	●	●	●	
Multi-Document Interface (MDI)	●	●	●	●	
Programmable Toolbar	●	●		●	●
Alignment Tools	●	●	●	●	
Advanced Security (User Manager)	●	●		●	●
Password Protection	●	●	●	●	
Multi-Language Capabilities	●	●	●	●	●
Code Converter	●	●	●		
Label File Preview	●	●	●	●	●
Graphics Preview	●	●	●	●	●
PRINTERS AND PRINTING					
Thermal Printer Support (650+ Printers)	●	●	●		●
Windows Printer Support	●	●	●	●	●
Network Printing	●	●	●	●	●
Batch Print Manager	●	●		●	●
TEXT AND DRAWING OPTIONS					
Font Downloader Assistant	●	●	●		●
True Type Fonts	●	●	●	●	●
Thermal Printer Supported Fonts	●	●	●		●
Word Wrap	●	●	●	●	●
Fit Text to Box Capability	●	●		●	●
Circles, Rectangles, Polygons, Lines	●	●	●	●	●
BAR CODE OPTIONS					
All Major Linear and 2D Symbolologies	●	●	●	●	●
UCC/EAN 128 Wizard	●	●	●	●	
Custom Human Readable	●	●	●	●	
DATA AND PROGRAMMABILITY OPTIONS					
DataBase Manager	●	●	●	●	●
ASCII Import Manager	●	●	●	●	●
Active X Automation Version 2	●	●		●	●
ODBC Compatibilities	●	●	●	●	●
Filler Mode (Keyboard Input)	●	●	●	●	●
SQL Capabilities	●	●		●	●
OLE Automation	●	●	●	●	●
HTML Forms Generator	●	●		●	●
COMet Data Acquisition / Watch	●	●		●	●
POF Generator and Configuration Tool	●	●			
Log File / Tracking Report	●	●		●	●
RFID Programming Capability	●	●			●
VARIABLES					
Import	●	●	●	●	●
Table Lookup Variable	●	●		●	●
Counter / Serialization	●	●	●	●	●
Date Code	●	●	●	●	●
Formula (Multiple Variables)	●	●	●	●	●
Variable Graphics	●	●	●	●	●
Global Variable	●	●	●	●	●

NOTE: CODESOFT 6 Runtime requires CODESOFT 6 Enterprise for all design, modification and security functions. Features checked in Runtime column primarily represent compatibility when used with Enterprise. Features in **BOLD** type are new features of CODESOFT 6, which are not in prior versions of CODESOFT.

L Labeling Software Systems

Stock Numbers	System Version	Requirements	Features
CODESOFT™ 6 Label Design Software			
CS6ENTER CS6PREM CS6WIN CS6NET CS6RUN	CD-ROM	Operating: Windows 95, Windows 98, ME Windows 2000, Windows NT Memory: Windows 95 with 16 MB RAM (32 recommended) Windows 98 or ME with 32 MB RAM (64 recommended) Windows 2000 or NT with 64 MB RAM (128 recommended) Disk Drives: CD-ROM Monitor: VGA monitor	<ul style="list-style-type: none"> • Works with all major Thermal Transfer and Windows™-compatible printers • True "WYSIWYG" imaging eliminates guesswork • Utilizes 32-bit Windows power and functionality • Supports all major 1D and 2D bar code symbologies • Imports text and data from other applications • Multi-lingual user support • Built-in database and ODBC compatibility
LabelMark™ Software			
LABELMARK	CD-ROM	Computer: IBM PC, 100% compatible with at least a 386 or compatible microprocessor Operating: Microsoft Windows 95 or later, in enhanced mode Memory: A hard disk with 2 MB of free disk space, 4 MB RAM Disk Drives: CD Monitor: Windows-compatible monitor and graphics card	<ul style="list-style-type: none"> • Easy to learn and use • Supports all Windows fonts • Automatically generates serial and/or constant data on labels • Accommodates stock and custom formats • Allows variable font sizes on each label • Windows 95 and higher • Includes toll-free technical support

CODESOFT™ is a trademark of Teklynx International Co.; Windows™ is a trademark of Microsoft Corp.

Sentinel™ Print Pack S/2 Host Printing Solution



Sentinel Print Pack

Part Number	Version
CS SENTINEL 3PTR	CD-ROM
CS SENTINEL 10PTR	CD-ROM

Systems Requirements

- ▶ Windows™ 95/98/2000 or NT
- ▶ VGA graphical screen or better
- ▶ CD-ROM drive

SENTINEL Print Pack is a data capture and distributive printing middleware, used to automate the printing of labels created with CODESOFT™ 5 Label Design Software; on any ERP, MRP II, or WMS system. SENTINEL Print Pack allows you to send data from your host application into Codesoft label designs without leaving your system.

SENTINEL Print Pack connects the data from your application to the Codesoft printing functions through an ActiveX protocol between the two modules. SENTINEL Print Pack's multi-threaded architecture allows labels to be printed simultaneously throughout the enterprise to over 500 different thermal printers or any Windows™ supported printer. Multiple applications can send transactions to the print server without compromising performance.

Features

- ▶ Uses one central location for label, database and label printing server administration
- ▶ Accepts ASCII, Raw Data Interface (RDI) or ODBC data
- ▶ Allows programming changes without affecting the host system
- ▶ Works with all major thermal transfer and Windows™ supported printers, and controls functions such as incrementing, speed, temperature, slew speed, etc.
- ▶ Supports variable True Type text font, and allows for variable text wrap
- ▶ Supports character based data mapping
- ▶ Advanced AIDC compatibility with RF Data Collection, 2D symbologies, 35 printer and graphic bar codes, and variable graphics (.pxc, .bmp, .tif, etc.)

Sentinel™ Print Pack S/2 Host Printing Solution

CONTINUED

SENTINEL™ Print Pack becomes a centralized print server within your enterprise. The benefit of the SENTINEL Print Pack print server is that maintenance of label designs and administration of distributive printing is centralized; therefore requiring less work.

Your application can run on any platform: PC, Mini or Mainframe. SENTINEL must be installed on a PC workstation or on a print server running under Windows™ 95/98/2000 or NT. The print server must be connected with your application system through a LAN/WAN. Your application must be able to generate a print file or copy a text file into a directory or a virtual printer on the server.

With SENTINEL Print Pack installed on a Windows NT system connected to a host, distributive printing has never been easier.

Brady offers SENTINEL Print Pack S/2 in a 3 printer or 10 printer package. Additional add-on printer licenses may also be purchased. Upgrades from prior versions of CODESOFT SENTINEL are also available for purchase.

Print SENTINEL Work Flow

