

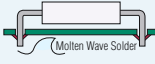
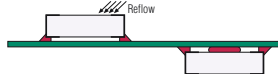
# Circuit Board and Component Identification

LASER, INK JET & DOT MATRIX LABELS



Brady label materials are specially engineered to resist the harsh environments associated with the processing of printed circuit boards.


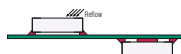
## LASER PRINTABLE PRODUCTS CIRCUIT BOARD PROCESS CHART

	 Through Hole Technology Top Bottom	 Surface Mount Technology (SMT) Top or Bottom	After Process
B-652, B-658	● Yes	● Yes	● Yes
B-409, B-410, B-709, B-737, B-747, B-773, B-799	▲ Yes*	✗ No	● Yes

\* In extreme high temperatures, testing of these materials is recommended.

## POLYIMIDES

### High-Temperature Amber Polyimide Film (B-652) Removable Amber Polyimide Film (B-658)

Part Number	Size Inch (mm)	Specifications on Page	 Through Hole Technology Top Bottom	 SMT Top / Bottom	After Process
LAT-2-652	.375 x .375 (9.53 x 9.53)	111	●	●	●
LAT-3-652	.65 x .25 (16.51 x 6.35)	111	●	●	●
LAT-4-652	.80 x .25 (20.32 x 6.35)	111	●	●	●
LAT-4-658	.80 x .25 (20.32 x 6.35)	111	●	●	●
LAT-5-652	.80 x .50 (20.32 x 12.70)	111	●	●	●
LAT-6-652	1.00 x .25 (25.40 x 6.35)	112	●	●	●
LAT-7-652	1.00 x .50 (25.40 x 12.70)	112	●	●	●
LAT-8-652	1.00 x .375 (25.40 x 9.53)	112	●	●	●
LAT-9-652	1.50 x .25 (38.10 x 6.35)	112	●	●	●
LAT-10-652	1.875 x .25 (47.63 x 6.35)	113	●	●	●
LAT-11-652	1.875 x .375 (47.63 x 9.53)	113	●	●	●
LAT-12-652	3.00 x .375 (76.20 x 9.53)	113	●	●	●
LAT-25-652	.50 x .437 (12.70 x 11.10)	111	●	●	●
LAT-26-652	.25 x .25 (6.35 x 6.35)	111	●	●	●
LAT-29-652	.65 x .20 (16.51 x 5.08)	111	●	●	●
LAT-29-658	.65 x .20 (16.51 x 5.08)	111	●	●	●

- Yes, this material will work with this application.
- ✗ No, this material does not work with this application.
- ▲ In extreme high temperatures, testing of these materials is recommended.

LASER PRINTABLE CIRCUIT BOARD AND COMPONENT ID LABELS

# Circuit Board and Component Identification

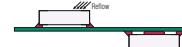
CONTINUED



Half-sheet LaserTabs™ are the sensible solution for limited on-demand printing runs.

## POLYESTER

Removable White Polyester (B-709)  
Permanent White or Yellow Polyester (B-747)



Part Number	Size Inch (mm)	Specifications on Page	Through Hole Technology Top	Through Hole Technology Bottom	SMT Top / Bottom	After Process
HLAT-1-747*	.30 x .25 (762 x 6.35)	111	▲	×	×	●
LAT-1-747	.30 x .25 (762 x 6.35)	111	▲	×	×	●
LAT-2-747	.375 x .375 (9.53 x 9.53)	111	▲	×	×	●
LAT-3-747	.65 x .25 (16.51 x 6.35)	111	▲	×	×	●
HLAT-4-747*	.80 x .25 (20.32 x 6.35)	111	▲	×	×	●
HLAT-4-747Y*	.80 x .25 (20.32 x 6.35)	111	▲	×	×	●
LAT-4-747	.80 x .25 (20.32 x 6.35)	111	▲	×	×	●
LAT-4-747Y	.80 x .25 (20.32 x 6.35)	111	▲	×	×	●
HLAT-5-747*	.80 x .50 (20.32 x 12.70)	111	▲	×	×	●
HLAT-5-747Y*	.80 x .50 (20.32 x 12.70)	111	▲	×	×	●
LAT-5-747	.80 x .50 (20.32 x 12.70)	111	▲	×	×	●
LAT-5-747Y	.80 x .50 (20.32 x 12.70)	111	▲	×	×	●
HLAT-6-747*	1.00 x .25 (25.40 x 6.35)	112	▲	×	×	●
HLAT-6-747Y*	1.00 x .25 (25.40 x 6.35)	112	▲	×	×	●
LAT-6-747	1.00 x .25 (25.40 x 6.35)	112	▲	×	×	●
LAT-6-747Y	1.00 x .25 (25.40 x 6.35)	112	▲	×	×	●
HLAT-7-747*	1.00 x .50 (25.40 x 12.70)	112	▲	×	×	●
HLAT-7-747Y*	1.00 x .50 (25.40 x 12.70)	112	▲	×	×	●
LAT-7-709	1.00 x .50 (25.40 x 12.70)	112	▲	×	×	●
LAT-7-747	1.00 x .50 (25.40 x 12.70)	112	▲	×	×	●
LAT-7-747Y	1.00 x .50 (25.40 x 12.70)	112	▲	×	×	●
LAT-8-747	1.00 x .375 (25.40 x 9.53)	112	▲	×	×	●
LAT-8-747Y	1.00 x .375 (25.40 x 9.53)	112	▲	×	×	●
LAT-9-709	1.50 x .25 (38.10 x 6.35)	112	▲	×	×	●
LAT-9-747	1.50 x .25 (38.10 x 6.35)	112	▲	×	×	●
HLAT-9-747*	1.50 x .25 (38.10 x 6.35)	112	▲	×	×	●
HLAT-9-747Y*	1.50 x .25 (38.10 x 6.35)	112	▲	×	×	●
LAT-9-747Y	1.50 x .25 (38.10 x 6.35)	112	▲	×	×	●
LAT-10-747	1.875 x .25 (47.63 x 6.35)	113	▲	×	×	●
LAT-11-747	1.875 x .375 (47.63 x 9.53)	113	▲	×	×	●
LAT-11-747Y	1.875 x .375 (47.63 x 9.53)	113	▲	×	×	●
LAT-12-709	3.00 x .375 (76.20 x 9.53)	113	▲	×	×	●
HLAT-12-747*	3.00 x .375 (76.20 x 9.53)	113	▲	×	×	●
HLAT-12-747Y*	3.00 x .375 (76.20 x 9.53)	113	▲	×	×	●
LAT-12-747	3.00 x .375 (76.20 x 9.53)	113	▲	×	×	●
LAT-12-747Y	3.00 x .375 (76.20 x 9.53)	113	▲	×	×	●
LAT-25-709	.50 x .437 (12.70 x 11.10)	111	▲	×	×	●
LAT-25-747	.50 x .437 (12.70 x 11.10)	111	▲	×	×	●
LAT-26-747	.25 x .25 (6.35 x 6.35)	111	▲	×	×	●
LAT-29-747	.65 x .20 (16.51 x 5.08)	111	▲	×	×	●
LAT-29-747Y	.65 x .20 (16.51 x 5.08)	111	▲	×	×	●

\*Half sheet. Sheet size 4.00" x 9.50" (101.60mm x 241.30mm)

- Yes, this material will work with this application.
- × No, this material does not work with this application.
- ▲ In extreme high temperatures, testing of these materials is recommended.

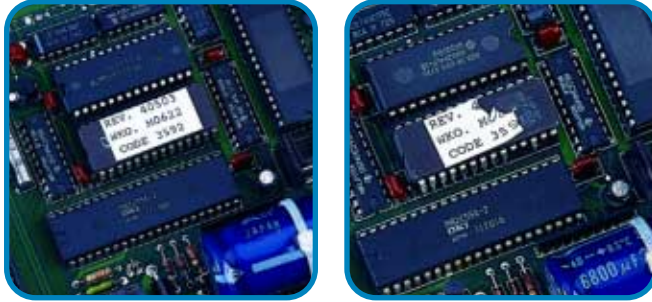
LASER, INK JET & DOT MATRIX LABELS

LASER PRINTABLE CIRCUIT BOARD AND COMPONENT ID LABELS

# Circuit Board and Component Identification

CONTINUED

LASER, INK JET & DOT MATRIX LABELS

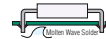


Tamper-evident polyolefin (B-410) destroys upon removal.

## METALLIZED POLYESTER

### Metallized Polyester (B-773)

Part Number	Size Inch (mm)	Specifications on Page	Through Hole Technology Top	Through Hole Technology Bottom	SMT Top / Bottom	After Process
LAT-7-773	1.00 x .50 (25.40 x 12.70)	112	▲	×	×	●
LAT-36-773	1.60 x .375 (40.64 x 9.26)	112	▲	×	×	●



## MISC. MATERIALS

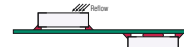
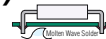
### Abrasion-Resistant White Polyolefin Film (B-409)

### Tamper-Evident White Polyolefin (B-410)

### Flame-Retardant White or Yellow Tedlar® Film (B-737)

### Permanent White Nylon Cloth (B-799)

Part Number	Size Inch (mm)	Specifications on Page	Through Hole Technology Top	Through Hole Technology Bottom	SMT Top / Bottom	After Process
LAT-3-410	.65 x .25 (16.51 x 6.35)	111	▲	×	×	●
LAT-4-410	.80 x .25 (20.32 x 6.35)	111	▲	×	×	●
LAT-4-737	.80 x .25 (20.32 x 6.35)	111	▲	×	×	●
LAT-7-410	1.00 x .50 (25.40 x 12.70)	112	▲	×	×	●
LAT-7-737	1.00 x .50 (25.40 x 12.70)	112	▲	×	×	●
LAT-7-737Y	1.00 x .50 (25.40 x 12.70)	112	▲	×	×	●
LAT-7-799	1.00 x .50 (25.40 x 12.70)	112	▲	×	×	●
LAT-8-409	1.00 x .375 (25.40 x 9.53)	112	▲	×	×	●
LAT-8-799	1.00 x .375 (25.40 x 9.53)	112	▲	×	×	●
LAT-9-409	1.50 x .25 (38.10 x 6.35)	112	▲	×	×	●
LAT-9-799	1.50 x .25 (38.10 x 6.35)	112	▲	×	×	●
LAT-11-409	1.875 x .375 (47.63 x 9.53)	113	▲	×	×	●
LAT-29-737	.65 x .20 (16.51 x 5.08)	111	▲	×	×	●
LAT-29-799	.65 x .20 (16.51 x 5.08)	111	▲	×	×	●
LAT-30-737	1.25 x .375 (31.75 x 9.53)	112	▲	×	×	●
LAT-30-737Y	1.25 x .375 (31.75 x 9.53)	112	▲	×	×	●



Tedlar® is a registered trademark of DuPont.

- Yes, this material will work with this application.
- ×
- ▲ In extreme high temperatures, testing of these materials is recommended.

LASER PRINTABLE CIRCUIT BOARD AND COMPONENT ID LABELS

# Wire and Cable Marking

## Nylon Cloth (B-799) Self-Laminating Polyester (B-361)

Part Number	Package Quantity	Size Inch (mm)	Specifications on Page
LAT-37-799	1,000/2,500	.80 x 1.437 (20.32 x 36.50)	111
LAT-38-799	1,000/2,500	.50 x 1.437 (12.70 x 36.50)	111
LAT-39-799	1,000/2,500	1.00 x 1.437 (25.40 x 36.50)	112
LAT-40-799	1,000/5,000	.50 x .75 (12.70 x 19.05)	111
LAT-15-361	5,000/1,000	.50 x .75 (12.70 x 19.05)	114
LAT-16-361	5,000/1,000	1.00 x .75 (25.40 x 19.05)	114
LAT-17-361	2,500/1,000	1.00 x 1.00 (25.40 x 25.40)	114
LAT-18-361	2,500/1,000	1.00 x 1.33 (25.40 x 33.78)	114
LAT-19-361	1,000	1.00 x 3.167 (25.40 x 80.44)	114
LAT-22-361	5,000	.50 x 1.50 (12.70 x 38.10)	114
LAT-27-361	1,000	1.875 x 3.167 (47.63 x 80.44)	114
LAT-35-361	2,500	1.20 x 1.50 (30.48 x 38.10)	114



*LaserTab™ markers adhere to ribbon cables without peeling when cables are flexed. Images remain clean and crisp, even after repeated handling.*

LASER, INK JET &  
DOT MATRIX LABELS

LASER PRINTABLE WIRE AND CABLE MARKING

# Data Communications Equipment and Cabling Labels

## VOICE AND DATA CABLING LABELS

Part Number	Application	Size Inch (mm)	Specifications on Page
LAT-17-361	2-pair fiber	1.00 x 1.00 (25.40 x 25.40)	114
LAT-18-361	Cat-5 4 pair copper UTP	1.00 x 1.33 (25.40 x 33.78)	114
LAT-19-361	25 pair copper	1.00 x 3.167 (25.40 x 80.44)	114



Brady cable labels have a proprietary adhesive that helps them stay attached.



Brady LAT-176-124 is precut for desi-strip inserts in faceplates.

## WORKSTATION LABELS

Part Number	Application	Size Inch (mm)	Specifications on Page
LAT-7-707	White for 1-2 outlet faceplates	1.00 x .50 (25.40 x 12.70)	112
LAT-7-712	Clear for 1-2 outlet faceplates	1.00 x .50 (25.40 x 12.70)	112
LAT-8-707	White for 1-2 outlet faceplates	1.00 x .375 (25.40 x 9.53)	112
LAT-8-712	Clear for 1-2 outlet faceplates	1.00 x .375 (25.40 x 9.53)	112
LAT-41-707	White for 1-2 outlet faceplates	.375 x 1.50 (9.53 x 38.10)	111
LAT-41-712	Clear for 1-2 outlet faceplates	.375 x 1.50 (9.53 x 38.10)	111
LAT-45-707	White for 1-6 outlet faceplates	.50 x .375 (12.70 x 9.53)	111
LAT-45-712	Clear for 1-6 outlet faceplates	.50 x .375 (12.70 x 9.53)	111
LAT-46-707	White for 1-6 outlet faceplates	.50 x .50 (12.70 x 12.70)	111
LAT-46-712	Clear for 1-6 outlet faceplates	.50 x .50 (12.70 x 12.70)	111
LAT-47-707	Clear for 1-2 outlet faceplates	1.50 x .50 (38.10 x 12.70)	112
LAT-47-712	White for 1-2 outlet faceplates	1.50 x .50 (38.10 x 12.70)	112
LAT-176-124	Faceplate desi-strip insert	1.975 x .375 (50.17 x 9.53)	115

## LASERTAB LANPAK

### LAT-LANPAK - 10 sheets of 8 popular sizes

Part Number	Application	Size Inch (mm)	Specifications on Page
LAT-8-707	Faceplate	1.00 x .375 (25.40 x 9.53)	112
LAT-18-361	CAT-5 Cable	1.00 x 1.33 (25.40 x 33.78)	114
LAT-44-707	Patch Panels	3.60 x .375 (91.44 x 9.53)	113
LAT-45-707	Faceplate/patch panels	.50 x .375 (12.70 x 9.53)	111
LAT-47-707	Faceplate	1.50 x .50 (38.10 x 12.70)	112
LAT-176-124	Faceplate desi-strips	1.98 x .38 (50.29 x 9.65)	115
LAT-177-124WH	110 blocks	7.91 x .48 (200.91 x 12.19)	115
LAT-177-124BL	110 blocks	7.91 x .48 (200.91 x 12.19)	115

# Data Communications Equipment and Cabling Labels

CONTINUED

## ► PATCH PANEL AND 110 BLOCK IDENTIFICATION

Part Number	Package Quantity	Color	Applications	Label Size Inch (mm)	Specifications on Page
LAT-46-707	10,000	White	Patch panel - label each port	.56 x .56 (14.2 x 14.2)	111
LAT-43-707	2,500	White	Patch panel - 4 port	2.875 x .375 (73.02 x 9.525)	113
LAT-44-707	2,500	White	Patch panel - 6 port	3.60 x .375 (94.44 x 9.525)	113
LAT-175-124-OR	10 sheets	Orange	Patch panel inserts	3.06 x .50 (77.77 x 12.07)	113
LAT-175-124-GR	10 sheets	Green	Patch panel inserts	3.06 x .50 (77.77 x 12.07)	113
LAT-175-124-PL	10 sheets	Purple	Patch panel inserts	3.06 x .50 (77.77 x 12.07)	113
LAT-175-124-WT	10 sheets	White	Patch panel inserts	3.06 x .50 (77.77 x 12.07)	113
LAT-175-124-GY	10 sheets	Gray	Patch panel inserts	3.06 x .50 (77.77 x 12.07)	113
LAT-175-124-BL	10 sheets	Blue	Patch panel inserts	3.06 x .50 (77.77 x 12.07)	113
LAT-175-124-BR	10 sheets	Brown	Patch panel inserts	3.06 x .50 (77.77 x 12.07)	113
LAT-175-124-YL	10 sheets	Yellow	Patch panel inserts	3.06 x .50 (77.77 x 12.07)	113
LAT-175-124-RD	10 sheets	Red	Patch panel inserts	3.06 x .50 (77.77 x 12.07)	113
LAT-177-124-BL	180	Blue	110 blocks	7.90 x .475 (200.81 x 12.07)	115
LAT-177-124-BR	180	Brown	110 blocks	7.90 x .475 (200.81 x 12.07)	115
LAT-177-124-GR	180	Green	110 blocks	7.90 x .475 (200.81 x 12.07)	115
LAT-177-124-GY	180	Gray	110 blocks	7.90 x .475 (200.81 x 12.07)	115
LAT-177-124-OR	180	Orange	110 blocks	7.90 x .475 (200.81 x 12.07)	115
LAT-177-124-PL	180	Purple	110 blocks	7.90 x .475 (200.81 x 12.07)	115
LAT-177-124-RD	180	Red	110 blocks	7.90 x .475 (200.81 x 12.07)	115
LAT-177-124-WT	180	White	110 blocks	7.90 x .475 (200.81 x 12.07)	115
LAT-177-124-YL	180	Yellow	110 blocks	7.90 x .475 (200.81 x 12.07)	115
LAT-178-759-OR	10 sheets	Orange	Bix blocks	6.625 x .625 (168.28 x 15.88)	113
LAT-178-759-GR	10 sheets	Green	Bix blocks	6.625 x .625 (168.28 x 15.88)	113
LAT-178-759-PL	10 sheets	Purple	Bix blocks	6.625 x .625 (168.28 x 15.88)	113
LAT-178-759-WT	10 sheets	White	Bix blocks	6.625 x .625 (168.28 x 15.88)	113
LAT-178-759-GY	10 sheets	Gray	Bix blocks	6.625 x .625 (168.28 x 15.88)	113
LAT-178-759-BL	10 sheets	Blue	Bix blocks	6.625 x .625 (168.28 x 15.88)	113
LAT-178-759-BR	10 sheets	Brown	Bix blocks	6.625 x .625 (168.28 x 15.88)	113
LAT-178-759-YL	10 sheets	Yellow	Bix blocks	6.625 x .625 (168.28 x 15.88)	113
LAT-178-759-RD	10 sheets	Red	Bix blocks	6.625 x .625 (168.28 x 15.88)	113



LAT-43-707 and LAT-44-707 are designed for patch panel identification.



Brady's LabelMark™ software program includes LAT-177 labels preloaded with 3 pair, 4 pair, and 5 pair numbering schemes for identifying 110 terminal blocks.

## ► GENERAL COMMUNICATION IDENTIFICATION

Part Number	Application	Size Inch (mm)	Specifications on Page
LAT-13-747W	Grounding, Splices, Pathway and General Identification in a closet	1.875 x .833 (47.6 x 21.2)	113
LAT-14-747W	Grounding, Splices, Pathway and General Identification in a closet	1.875 x .833 (47.6 x 21.2)	113
LAT-24-747	Grounding, Splices, Pathway and General Identification in a closet	1.75 x 1.00 (44.5 x 25.4)	114
LAT-24-773	Grounding, Splices, Pathway and General Identification in a closet	1.75 x 1.00 (44.5 x 25.4)	114

LASER, INK JET & DOT MATRIX LABELS

LASER PRINTABLE DATA COMMUNICATION LABELS

# Faceplate Identification

LASER, INK JET & DOT MATRIX LABELS

## Faceplate Identification (B-176)

Part Number	Size Inch (mm)	Specifications on Page
LAT-176-124	1.975 x .375 (50.17 x 9.53)	115

## General Identification Labels

### RATING PLATES AND ASSET IDENTIFICATION

- Rough Surface White Polyester (B-707)
- Removable White Polyester (B-709)
- Rough Surface Translucent Polyester (B-712)
- Permanent White or Yellow Polyester (B-747)
- General Purpose Paper (B-759)

Part Number	Size Inch (mm)	Specifications on Page
LAT-5-759	.80 x .50 (20.32 x 12.70)	111
LAT-7-707	1.00 x .50 (25.40 x 12.70)	112
LAT-7-709	1.00 x .50 (25.40 x 12.70)	112
LAT-7-712	1.00 x .50 (25.40 x 12.70)	112
LAT-7-747	1.00 x .50 (25.40 x 12.70)	112
LAT-7-747Y	1.00 x .50 (25.40 x 12.70)	112
LAT-8-707	1.00 x .375 (25.40 x 9.53)	112
LAT-8-712	1.00 x .375 (25.40 x 9.53)	112
LAT-13-707	1.875 x .833 (47.63 x 21.16)	113
LAT-13-747	1.875 x .833 (47.63 x 21.16)	113
LAT-13-747Y	1.875 x .833 (47.63 x 21.16)	113
LAT-13-759	1.875 x .833 (47.63 x 21.16)	113
LAT-14-747	1.875 x 1.133 (47.63 x 33.78)	113
LAT-21-707	2.50 x 1.00 (63.50 x 25.40)	113
LAT-21-747	2.50 x 1.00 (63.50 x 25.40)	113
LAT-21-747Y	2.50 x 1.00 (63.50 x 25.40)	113
LAT-31-707	2.00 x .90 (50.80 x 22.86)	113
LAT-31-747	2.00 x .90 (50.80 x 22.86)	113
LAT-31-759	2.00 x .90 (50.80 x 22.86)	113
LAT-32-747	3.00 x .90 (76.20 x 22.86)	113
LAT-32-759	3.00 x .90 (76.20 x 22.86)	113
LAT-33-707	2.00 x 1.437 (50.80 x 36.50)	113
LAT-33-747	2.00 x 1.437 (50.80 x 36.50)	113
LAT-33-759	2.00 x 1.437 (50.80 x 36.50)	113
LAT-34-707	3.00 x 1.437 (76.20 x 36.50)	113
LAT-34-747	3.00 x 1.437 (76.20 x 36.50)	113
LAT-34-759	3.00 x 1.437 (76.20 x 36.50)	113
LAT-41-707	1.50 x .375 (38.10 x 9.53)	112
LAT-42-707	.56 x .56 (14.22 x 14.22)	111
LAT-43-707	2.875 x .375 (73.02 x 9.53)	113
LAT-44-707	3.60 x .375 (91.44 x 9.53)	113
LAT-45-707	.50 x .375 (12.70 x 9.53)	111
LAT-45-712	.50 x .375 (12.70 x 9.53)	111
LAT-46-707	.50 x .50 (12.70 x 12.70)	111
LAT-46-712	.50 x .50 (12.70 x 12.70)	111
LAT-47-707	1.50 x .50 (38.10 x 12.70)	112
LAT-47-712	1.50 x .50 (38.10 x 12.70)	112



LAT-43-707 and LAT-44-707 are designed for patch panel identification.



Laser-printed labels provide permanent, positive identification for tools and equipment.



Brady's polyester materials, B-747 and B-773, are perfect for on-demand printing of rating plates. They eliminate the hassle of purchasing pre-printed labels, and permit better control of labeling design and cost.

LASER PRINTABLE GENERAL ID LABELS

## General Identification

CONTINUED

### RATING PLATES AND ASSET IDENTIFICATION CONTINUED

#### Abrasion-Resistant White Polyolefin (B-409) Tamper-Evident White Polyolefin (B-410)

Part Number	Size Inch (mm)	Specifications on Page
LAT-7-410	1.00 x .50 (25.40 x 12.70)	111
LAT-13-409	1.875 x .833 (47.63 x 21.16)	112
LAT-13-410	1.875 x .833 (47.63 x 21.16)	112

#### Rough Surface Translucent Polyester (B-712) Translucent Polyester (B-722)

Part Number	Size Inch (mm)	Specifications on Page
LAT-7-722	1.00 x .50 (25.40 x 12.70)	112
LAT-13-712	1.875 x .833 (47.63 x 21.16)	113
LAT-13-722	1.875 x .833 (47.63 x 21.16)	113
LAT-21-712	2.50 x 1.00 (63.50 x 25.40)	113
LAT-21-722	2.50 x 1.00 (63.50 x 25.40)	113
LAT-41-712	1.50 x .375 (38.10 x 9.525)	112
LAT-42-712	.56 x .56 (14.22 x 14.22)	111

#### Permanent Metallized Polyester (B-773)

Part Number	Size Inch (mm)	Specifications on Page
LAT-7-773	1.00 x .50 (25.40 x 12.70)	112
LAT-20-773	1.50 x .75 (38.10 x 19.05)	112
LAT-21-773	2.50 x 1.00 (63.50 x 25.40)	113

### PERMASHIELD™ LABELS

#### White Polyester (B-747) with Clear Polyester Overlaminates (B-966) Metallized Polyester (B-773) with Clear Polyester Overlaminates (B-966)

Part Number	Size Inch (mm)	Specifications on Page
LAT-23-747	1.00 x .50 (25.40 x 12.70)	114
LAT-23-773	1.00 x .50 (25.40 x 12.70)	114
LAT-24-747	1.75 x 1.00 (44.45 x 25.40)	114
LAT-24-773	1.75 x 1.00 (44.45 x 25.40)	114

### SHEET LABELS FOR PROTOTYPING

#### Abrasion-Resistant White Polyolefin Film (B-409) Translucent Polyester (B-722) Permanent White or Yellow Polyester (B-747) Permanent Metallized Polyester (B-773)

Part Number	Size Inch (mm)	Specifications on Page
LAT-28-409-25SH	8.50 x 11.00 (215.90 x 279.40)	115
LAT-28-722-25SH	8.50 x 11.00 (215.90 x 279.40)	115
LAT-28-747-25SH	8.50 x 11.00 (215.90 x 279.40)	115
HLAT-28-747-25*	4.00 x 9.50 (101.60 x 241.30)	115
LAT-28-747Y-25SH	8.50 x 11.00 (215.90 x 279.40)	115
HLAT-28-747Y-25*	4.00 x 9.50 (101.60 x 241.30)	115
LAT-28-773-25SH	8.50 x 11.00 (215.90 x 279.40)	115

\*Half sheet. Sheet size 4.00" x 9.50" (101.60mm x 241.30mm)



Brady's durable PermaShield™ labels are protected by a clear overlaminates film, so they remain clear and easy-to-read, even in harsh environments.



For prototyping labels when you wish to cut your own sizes. Available in 8.509" x 11.009" or 4.009" x 9.509" sheets.